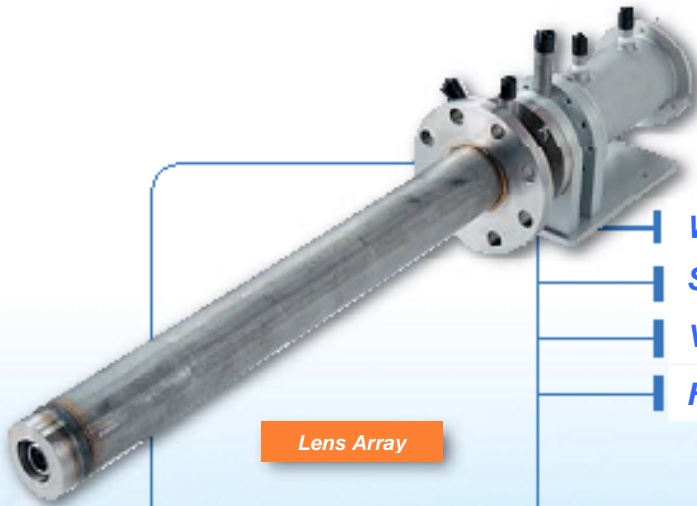
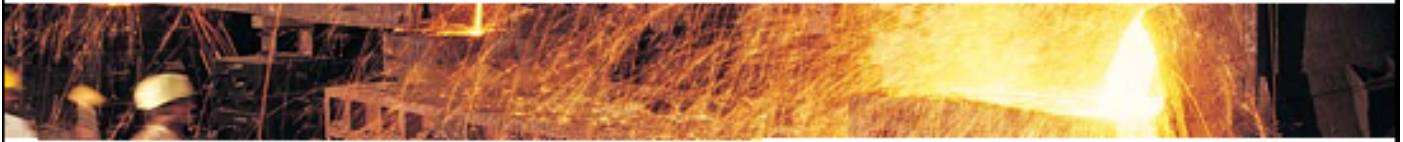


# NEW ThermoPix ( CPA-R Series )

Hi-Temp

## Video Camera / Pyrometer

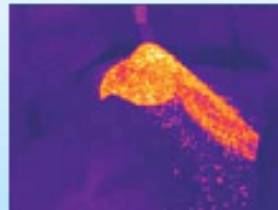


Lens Array



Processor

- Wide Temperature Range
- Simple Configuration
- Video & Area Temperature Functions
- Hi-Temp Optical Lens Array System



This system utilizes a CCD camera, which has sensitivity at  $1.0\mu\text{m}$  and Image Processing Unit that provides an image and converts video signal from the camera into temperature information. The special high temperature optics lens array system can be inserted through a small insertion port on many types of furnaces. The Image Processing Unit has an 8.3" LCD touch panel that displays wide-angle image and temperature information. It also provides the capability of up to 40 points of Contact Inputs/Outputs as well as 32 points of Analog Outputs through an external I/O unit.



**Model**

• Lens Array and Camera Unit

C P A - R   S   -  N

- Lens Type
  - 00 : 100° Lens
  - 60 : 60° Lens
  - 45 : 45° Lens
- Array Length
  - 04 : 360mm
  - 05 : 500mm
  - 07 : 680mm
  - 09 : 900mm
  - 11 : 1100mm
- Cooling System
  - W : Water & Air Cooling
  - A : Air Cooling Only
- Monitoring System
  - N : Using Processing Unit
  - C : Video Signal Out

• Image Processing Unit

C P G - G M P R

• Custom Cable

C P Y - Z R C    
(5m, 10m and 25m are available)

• Power Supply Box

C C Z - Z R P

• Video Input Cable

C P Y - Z R B   
(     1,2 or 3)

• Video Input Box

C P Y - Z R X

**Specifications**

• Lens Array and Camera Unit

Viewable Angle	H96° x V70° (100° Lens)
Wavelength	0.8 to 1.0μm
Temp Range	700° to 2500°C (Assignable Span:200° to 500°C)
Monitoring Method	Standard - Monitoring on Output - Provides Analog Color signal
Accuracy	±1% at Full Scale (Black Body)

• Image Processing Unit

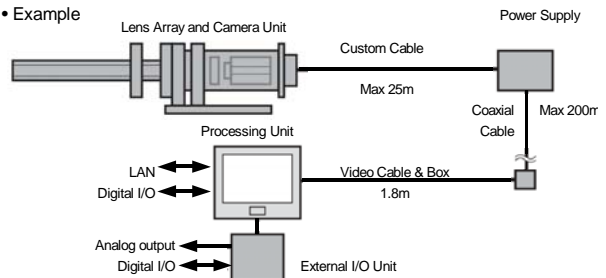
Camera Control	Up to 3 Cameras	
Display	8.4" Color LCD (Touch Panel)	
External Input/Output	Contact Output	Max 40 points (w/ Optional I/O unit)
	Contact Input	Max 40 points (w/ Optional I/O unit)
	Analog Output	Max 32 points (w/ Optional I/O unit)
Analyzing Function	Spot	16 spots
	Line	32 lines
	Area	32 areas
	Filters	Binalize/Pixel/Edge
Operational Condition	Temperature	0 to 45°C
	Humidity	20 to 85% RH (Non Condensati
Protective Structure	IP65 Compliant (Front Panel)	

• External I/O Unit (Optional)

AC/DC Power Supply Unit	100 - 120V AC
I/O Controller Module	For connecting Processing Unit and I/O Module
Digital I/O Module	8 In/8 Out per Module, Up to 4 Modules
Analog Output Module	4 Outs per Module, Up to 8 Modules

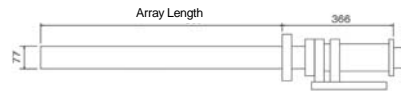
**Configuration**

• Example

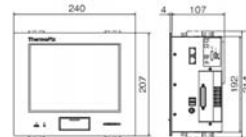


**Configuration**

• Lens Array and Camera unit



• Processing unit



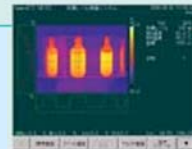
**Utilities**

- Purge Air : Instrument Air
- Seal Air : Instrument Air
- Cooling Water : Industrial Clean Water

**Software**

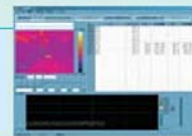
Display/Setup Software (offline use)  
CPY-ZFP011

This software is to display thermal image data that has been saved on the processing unit. The data can be transferred from the processing unit via USB memory stick. The interface and appearance on the display are the same as the processing unit, therefore you can also change/manage Settings File and System Setup.



Data Logging/Analysing Software  
CPY-ZFP002

This package software is to support large amount of data logging and analysis via LAN connection.



This product contains items under Japanese export control. Delivering this product overseas is subject to the export licenses governed by the Ministry of Economy, Trade and Industry (METI) in Japan. It is strictly regulated to export this product to certain nations. Prior authorization by METI is also required when re-transfer, re-sale and/or re-export of this product occurs.

- The company names and brand names used in this catalog are the trademarks or registered trademarks of respective companies.
- This specification is subject to change without notice.
- All specifications are written as of December 2008

INSTRUMENTATION, CONTROL AND SYSTEMS

**CHINO**

CHINO CORPORATION

32-8 KUMANO-CHO, ITABASHI-KU,

TOKYO 173-8632, JAPAN

Phone: +81-3-3956-2171

Fax: +81-3-3956-0915

Web: <http://www.chino.co.jp/>

