



E F F I C I E N T
P E R I M E T E R
P R O T E C T I O N

KAPIRIS

> LONG RANGE OUTDOOR MOTION SENSOR



- **KAPIRIS is a new generation dual-tech outdoors motion sensor.** Its long and narrow detection scope creates a 50mx3m detection wall. This sensor integrates a microwave antenna with doppler effect in K (24GHz) as well as a PIR sensor and was designed for reliable long range detection performances.
- **CCTV PILOT :** Developed to pilot CCTV cameras.
- **INTRUDER TRACKER :** KAPIRIS allows to track intruders inside the the protected zone. When associated with a CCTV system, it will become an essential tool to help security officers to catch intruders.
- **PERIMETER INTRUSION DETECTION SYSTEM ADDITION :** Thanks to its long yet narrow detection scope, KAPIRIS is a perfect addition to traditional perimeter security solutions and allows the coverage of complex perimeters, with detection zones difficult to create with other technologies. (steep terrain, funny angles, ...)

● **MINIMAL FALSE ALARM RATE :**

- Auto adaptation of sensor's sensitivity threshold to atmospheric conditions (wind, rain, sun, snow).
- Automatic ejection of one or the other sensor with auto adaptation of the remaining sensor's sensitivity threshold.

● **ALL INCLUSIVE SOLUTION**

- Integrated alignment tools
- Includes a protecting lid as well as a mounting plate.

● **PRECISE 50M OUTDOORS DETECTION RANGE WITH 5M STEPS CONFIGURATION**

- Simplified positioning and installation of the sensor
- Precise configuration of the surface to protect without diminishing sensitivity.

● **NO DEAD ZONE**

Kapiris is equipped with a revolutionary antenna with a double detection scope which ensures a long range detection and eliminates the « dead angle » at the bottom of the sensor.

● **SIMPLIFIED MAINTENANCE**

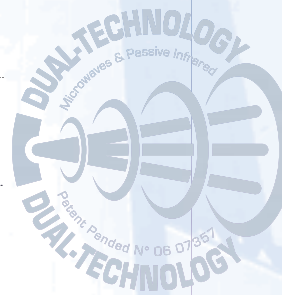
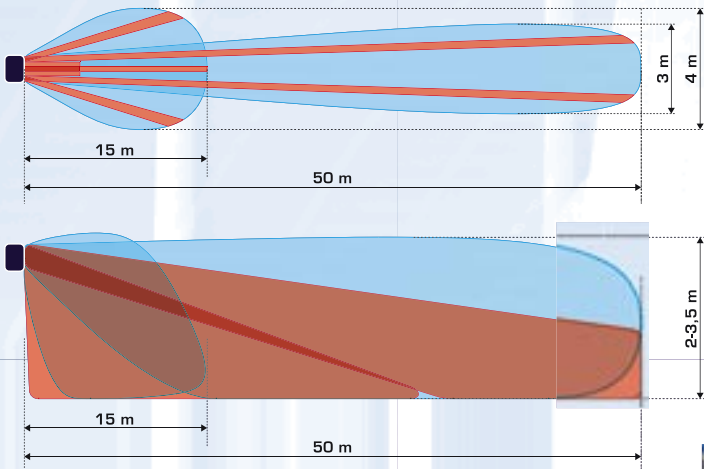
- Lower risks of product's breakdown
- Cost-efficient



> DUAL TECHNOLOGY : FEATURES THAT MAKE THE DIFFERENCE

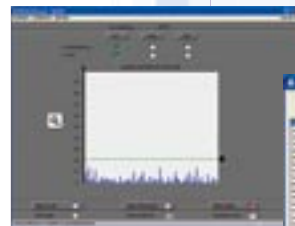
DETECTION RANGE AND SENSITIVITY

- Detection range setting : 15 to 50m with 5m steps
- Sensitivity setting
- Automatic microwaves threshold setting : background noise compensation



INSTALLATION AND SERVICE TOOL

- Anti-masking activation/deactivation
- Manual ejection of one of the sensors (Doppler or PIR)



INTEGRATED CONFIGURATION TOOL

- Integrated Walk test with LED + Buzzer to configure the system.

NETWORK CAPABILITY

- Alarm information can be sent to control panel through MAXIBUS hub and MODBUS Protocol
- Remote maintenance through network and WINMAXI software

ALARM OUTPUT

- Intrusion
- Anti-masking
- Tamper

ALARM HISTORY

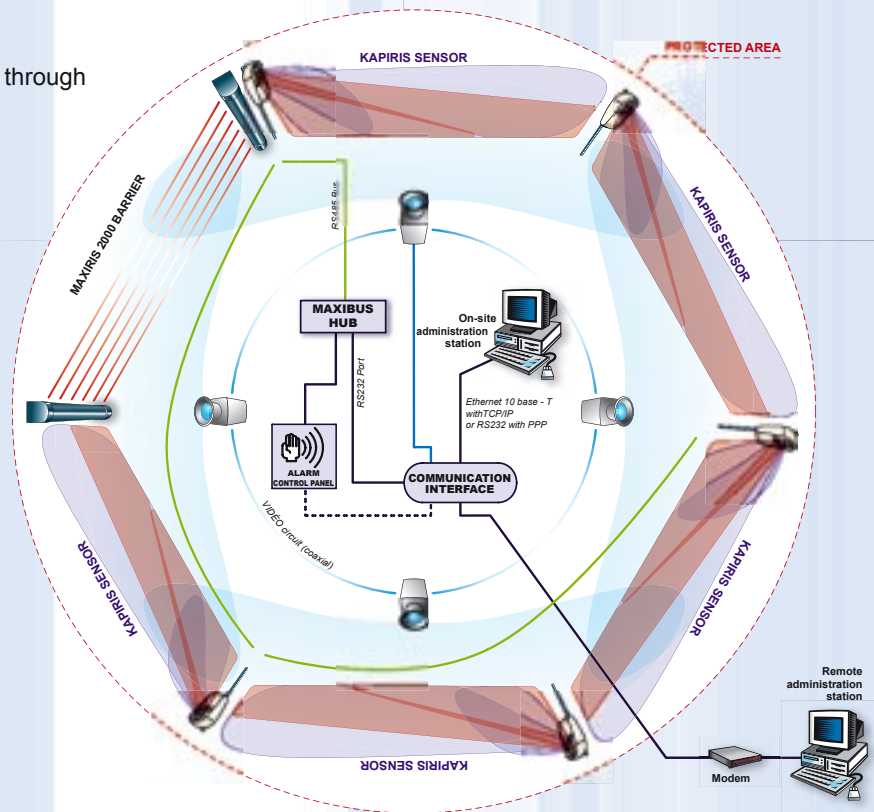
- Log of the last 100 events

TECHNICAL CHARACTERISTICS

- Power supply : 12Vdc
- Consumption: 120mA
- Protection index : IP54

DIMENSIONS

- Height 320mm
- Width 200mm
- Depth 60mm



YOUR DISTRIBUTOR :



1, rue du Dauphiné - F- 69120 VAULX-EN-VELIN
 Tél. 33(0)4 78 03 06 10 - Fax 33(0)4 78 68 24 61
 Mail : export@sorhea.fr - Web : www.sorhea.com

SORHEA provides detailed product information sheets for its customers. In a continuing effort to improve the quality and performance of its products, SORHEA reserves the right to change features of its products without prior notice.