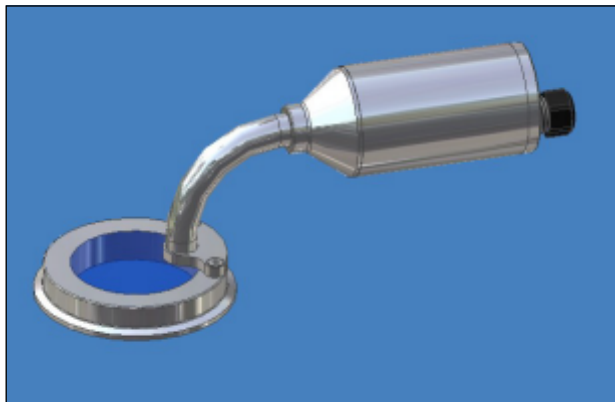


CANTY

PROCESS TECHNOLOGY

PUREVIEW™ SANITARY SIGHT GLASS/LIGHTING SYSTEMS



COLD LIGHT

Canty fiber optic lighting systems have been designed to provide efficient, high output tungsten-halogen light in a cost effective package. Canty uses only high quality, flexible fiber optic light pipes to guide the light from our light source through a sight glass or process connection. The light is elliptically focused into the fiber optic light pipe and guided through the sight glass minimizing losses while maximizing your tank or vessel lighting!

ADVANTAGES OF THE PUREVIEW™

- Various worldwide approvals
- Extremely high strength due to radial compression on the hermetically sealed glass
- Very high impact strength and thermal shock resistance due to pre-stressing
- Operates under positive & negative pressure
- Certification on material and pressure rating is available, typical of ASME code

APPLICATIONS

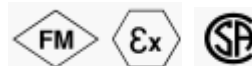
- Sterile Process Vessels
- Aseptic Tanks
- Sanitary Areas
- Portable Tanks
- Reactors, Fermentors, Sterilizers
- Freeze Dryers
- Many, many more

FEATURES OF PUREVIEW™ TRI-CLAMP® SIGHT GLASS/ LIGHTING SYSTEMS

- Many models are FM, CSA approved!
- Flexible fiber optic light bundle provides a high intensity output
- NEMA 4, IP66, Explosion proof (Class I, Div. 1, Group B, C & D, Class II, Div. 1, Groups E, F & G) or Flameproof EEx d IIC T6 Ratings
- One piece sanitary construction
- Connects to standard Tri-clamp® connection
- Special sizes available upon request
- Cool Light Output; There is No Product Bake On.
- ASME BPE / FDA / USP Compliant

UNMATCHED SAFETY AND RELIABILITY

All Canty sight glasses feature the Fuseview™ window. Our unique fused glass windows far exceed all conventional tempered glass windows in safety and performance. By fusing glass to metal, a high pressure, high safety, hermetic seal is formed. The fused glass technology ensures safety with every Fuseview™. What's more, our windows can easily be removed for cleaning. Canty windows do not have to be discarded as do traditional tempered glass windows. Canty fused glass windows can be re-used again and again.



SPECIFICATIONS

Fiber Optic Bundle

Construction:	Multi-Fiber Glass Bundle
Exterior:	Crush Resistant Outer Tubing
Termination:	Stainless Steel, .75" diameter
Lengths:	12", 24", 36", 48", 60", 72", 96", 120", 144" lengths are available. Consult factory for more sizes

CANTY

JM Canty Inc | Buffalo, NY USA |
JM Canty Ltd | Dublin, Ireland

Ph: (716) 625 4227 | Fax: (716) 625 4228
Ph: + 353 (01) 882 9621 | Fax: +353 (01) 882 9622

www.jmcanty.com

Document P/N: TA9306-1 Rev. 20

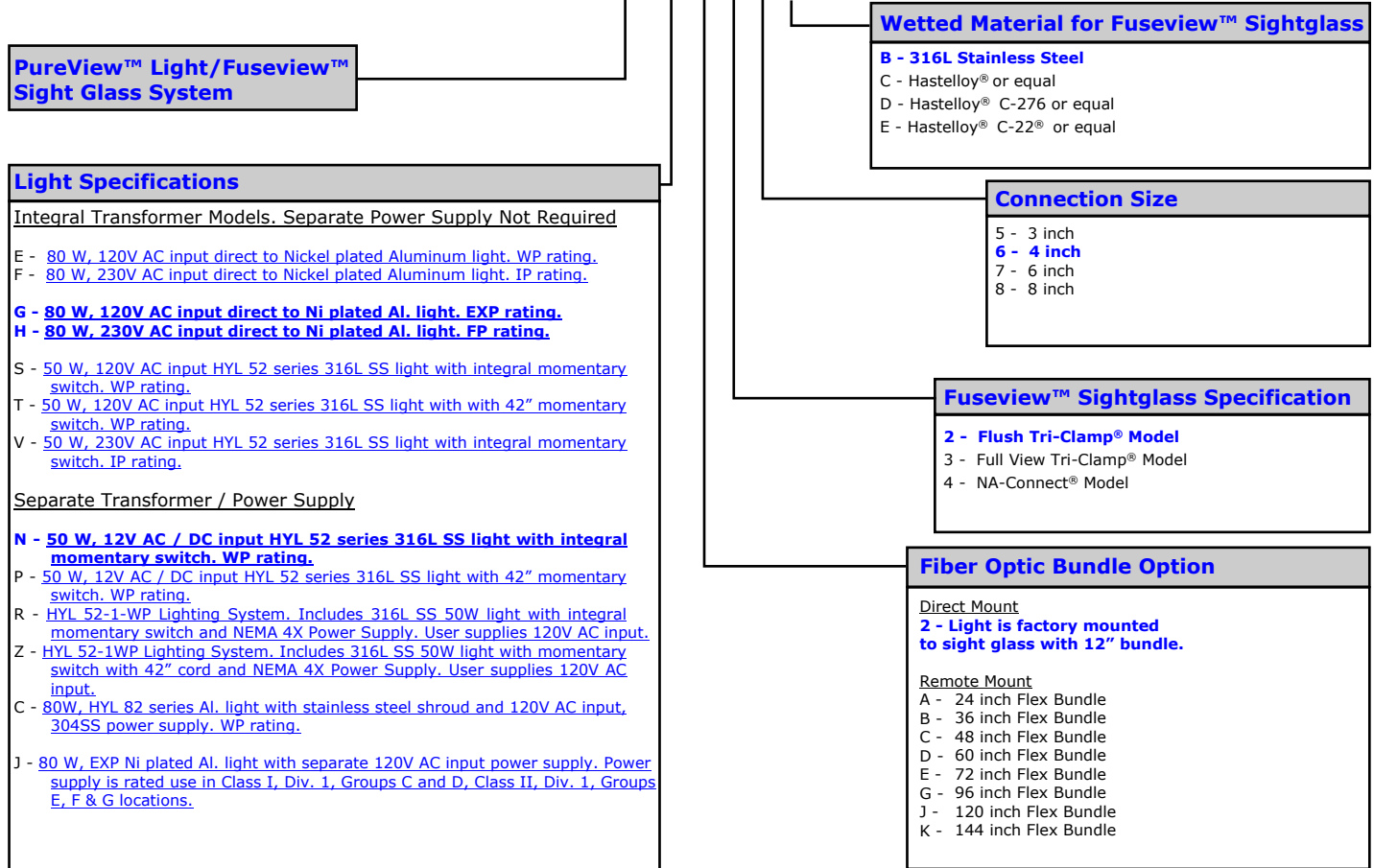
Ordering Information

HOW TO ORDER: Select the appropriate symbols and build a part number as shown.

Recommended model options are shown in bold.

EXAMPLE:

PVN226B



PureView™ Light/Fuseview™ Sight Glass System

Light Specifications

Integral Transformer Models. Separate Power Supply Not Required

E - 80 W, 120V AC input direct to Nickel plated Aluminum light. WP rating.
 F - 80 W, 230V AC input direct to Nickel plated Aluminum light. IP rating.

G - 80 W, 120V AC input direct to Ni plated Al. light. EXP rating.
H - 80 W, 230V AC input direct to Ni plated Al. light. FP rating.

S - 50 W, 120V AC input HYL 52 series 316L SS light with integral momentary switch. WP rating.
 T - 50 W, 120V AC input HYL 52 series 316L SS light with with 42" momentary switch. WP rating.
 V - 50 W, 230V AC input HYL 52 series 316L SS light with integral momentary switch. IP rating.

Separate Transformer / Power Supply

N - 50 W, 12V AC / DC input HYL 52 series 316L SS light with integral momentary switch. WP rating.
 P - 50 W, 12V AC / DC input HYL 52 series 316L SS light with 42" momentary switch. WP rating.
 R - HYL 52-1-WP Lighting System. Includes 316L SS 50W light with integral momentary switch and NEMA 4X Power Supply. User supplies 120V AC input.
 Z - HYL 52-1WP Lighting System. Includes 316L SS 50W light with momentary switch with 42" cord and NEMA 4X Power Supply. User supplies 120V AC input.
 C - 80W, HYL 82 series Al. light with stainless steel shroud and 120V AC input, 304SS power supply. WP rating.
 J - 80 W, EXP Ni plated Al. light with separate 120V AC input power supply. Power supply is rated use in Class I, Div. 1, Groups C and D, Class II, Div. 1, Groups E, F & G locations.

Wetted Material for Fuseview™ Sightglass

B - 316L Stainless Steel
 C - Hastelloy® or equal
 D - Hastelloy® C-276 or equal
 E - Hastelloy® C-22® or equal

Connection Size

5 - 3 inch
6 - 4 inch
 7 - 6 inch
 8 - 8 inch

Fuseview™ Sightglass Specification

2 - Flush Tri-Clamp® Model
 3 - Full View Tri-Clamp® Model
 4 - NA-Connect® Model

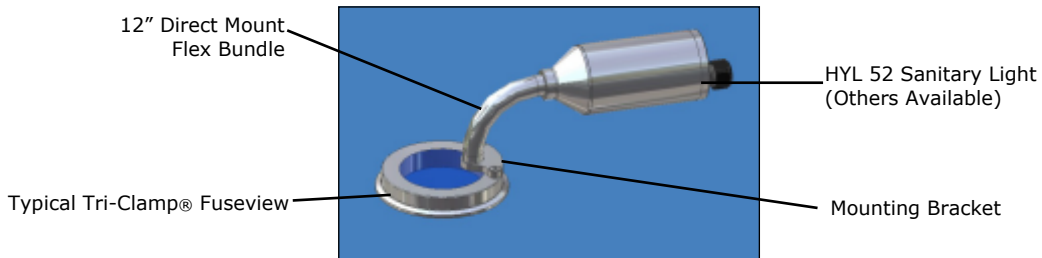
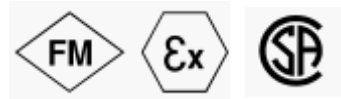
Fiber Optic Bundle Option

Direct Mount
2 - Light is factory mounted to sight glass with 12" bundle.

Remote Mount
 A - 24 inch Flex Bundle
 B - 36 inch Flex Bundle
 C - 48 inch Flex Bundle
 D - 60 inch Flex Bundle
 E - 72 inch Flex Bundle
 G - 96 inch Flex Bundle
 J - 120 inch Flex Bundle
 K - 144 inch Flex Bundle

WP = Weather Proof
 EXP = Explosion Proof
 FP = Flame Proof
 IP = Ingress Protection

Notes:
 **All models include required mounting brackets.
 **Canty reserves the right to upgrade to Hastelloy® C-family of alloys or equal at their own cost.



CANTY

JM Canty Inc | Buffalo, NY USA | Ph: (716) 625 4227 | Fax: (716) 625 4228
 JM Canty Ltd | Dublin, Ireland | Ph: +353 (01) 882 9621 | Fax: +353 (01) 882 9622

www.jmcanty.com

Document P/N: TA9306-1 Rev. 20

Hastelloy® is a registered trademark of Haynes International.
 Tri-Clamp® is a registered trademark of Alfa Laval Inc.